

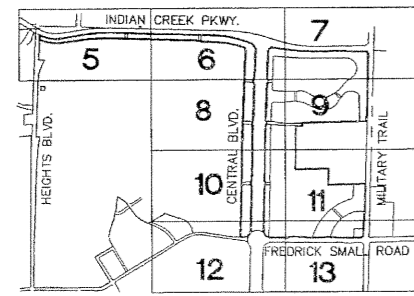
# ABACOA PLAT NO. 2

A Portion of Sections 13 and 14, Township 41 South, Range 42 East  
Town of Jupiter, Palm Beach County, Florida.

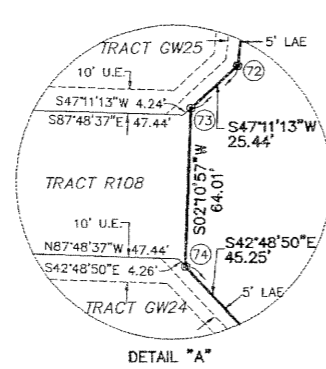
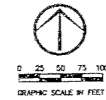
This Instrument prepared by James E. Park, P.S.M.  
Williams, Hatfield & Stoner, Inc. - Engineers Surveyors Planners Environmental Scientists  
1901 South Congress Avenue, Suite 150, Boynton Beach, Florida 33426

September, 1999

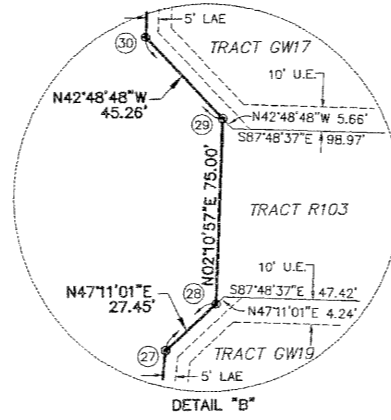
Sheet 8 of 13



Location Map



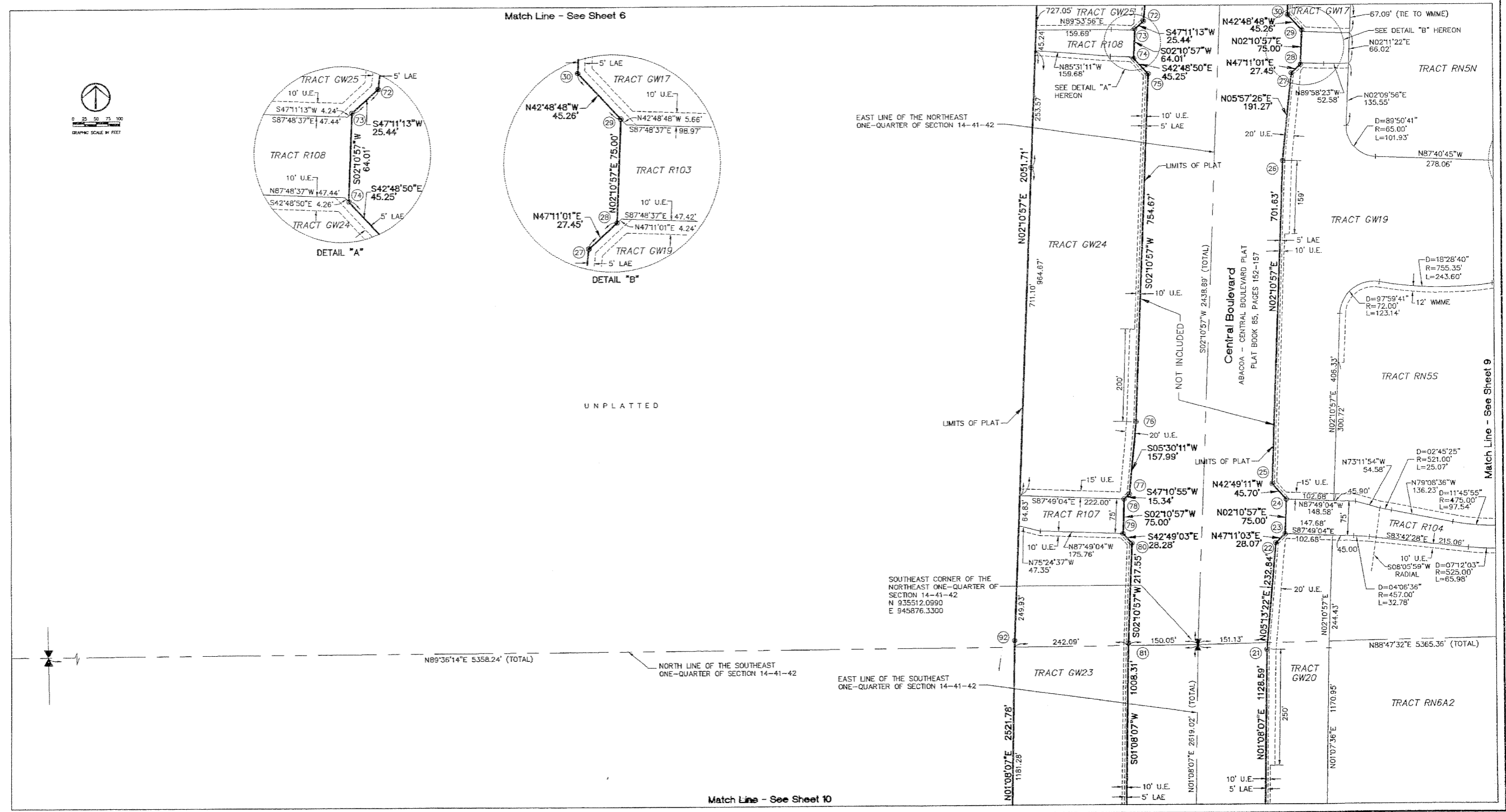
DETAIL "A"



DETAIL "B"

Match Line - See Sheet 6

UNPLATTED



Match Line - See Sheet 10